

RESIDENZA
Ascona

—
Appartamento **B14**

Edificio **B**

PIANO 4

PIANO 3

PIANO 2

PIANO 1

PT



Piano	1
Locali	3
Superficie	m ² 79

Annotazioni

.....

.....

.....

.....

.....

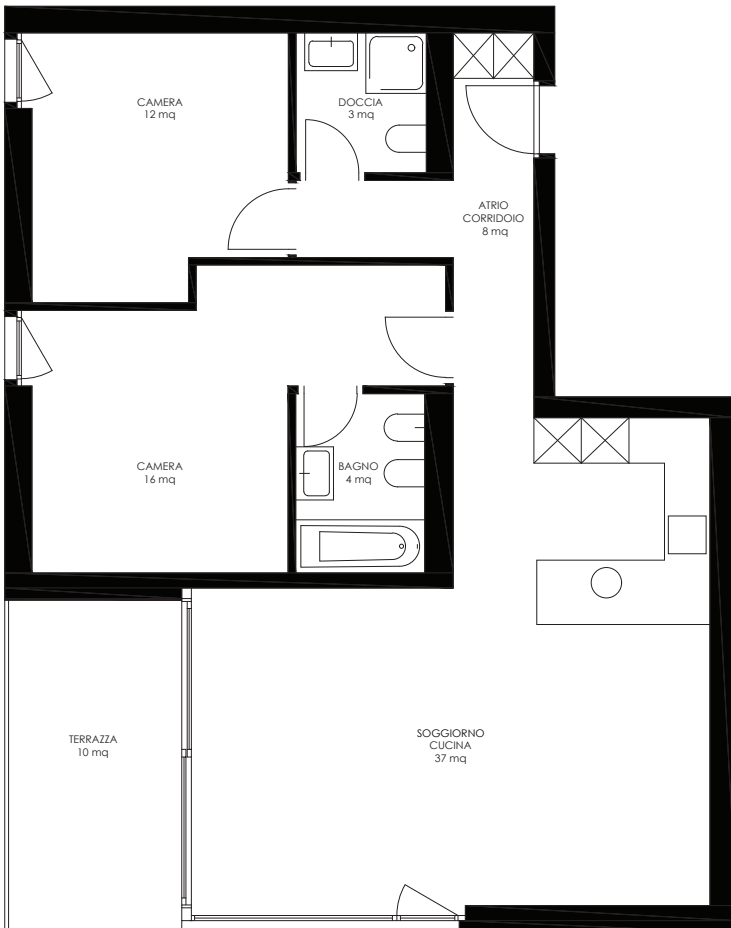
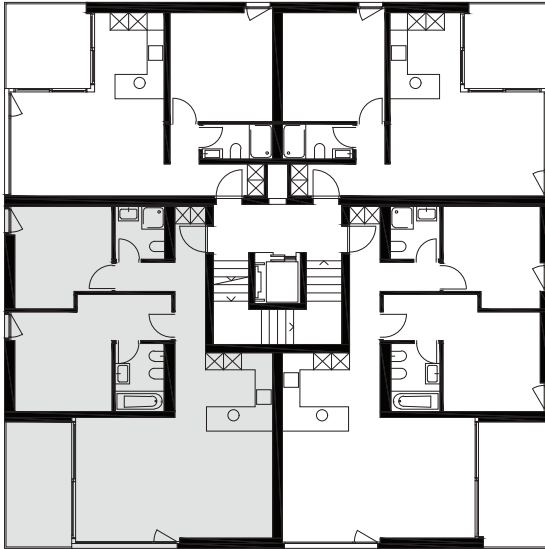
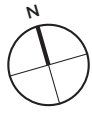
.....

.....

.....

.....

.....



SCALA 1:100



Wincasa SA
Via F. Pelli 1
6900 Lugano
www.wincasa.ch

Contatto:
Tel. 058 455 77 77
info@wincasa.ch