

RESIDENZA
Ascona

—
Appartamento **A41**

Edificio **A**

PIANO 4

PIANO 3

PIANO 2

PIANO 1

PT



Piano	4
Locali	2
Superficie	m ² 49

Annotazioni

.....

.....

.....

.....

.....

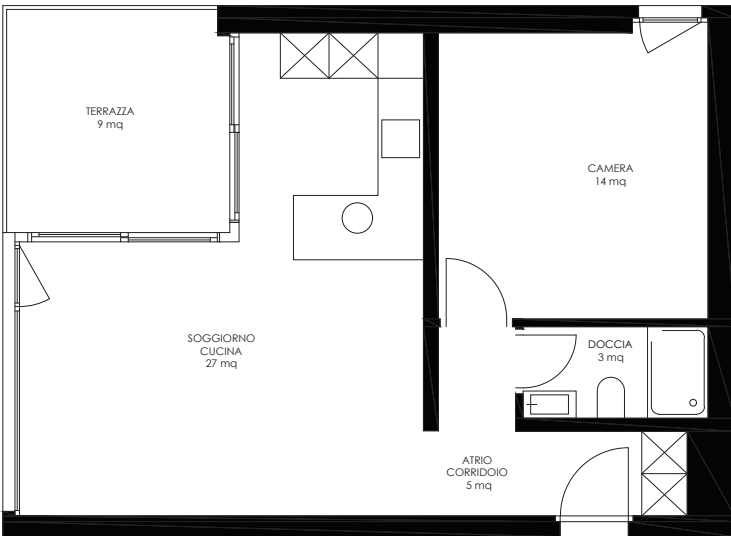
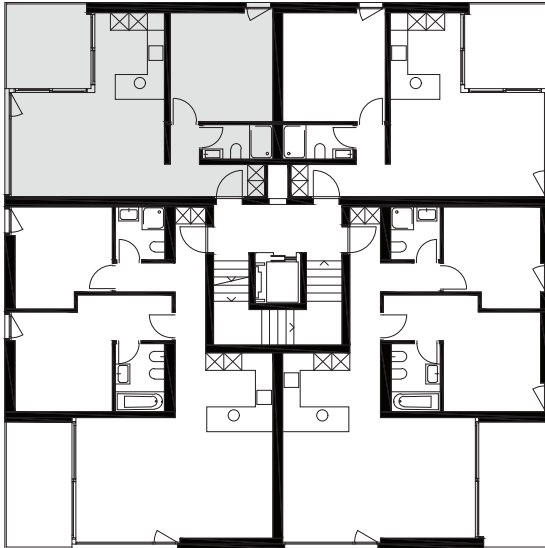
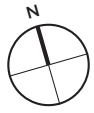
.....

.....

.....

.....

.....



SCALA 1:100



Wincasa SA
Via F. Pelli 1
6900 Lugano
www.wincasa.ch

Contatto:
Tel. 058 455 77 77
info@wincasa.ch